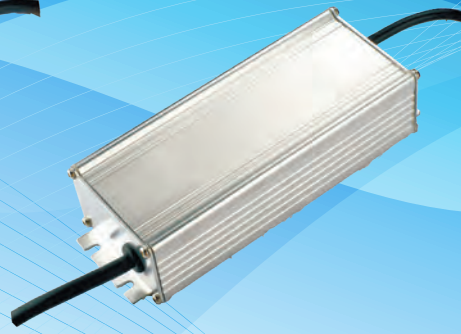




65 Watt LED Driver

LD - X X ◊ ◊

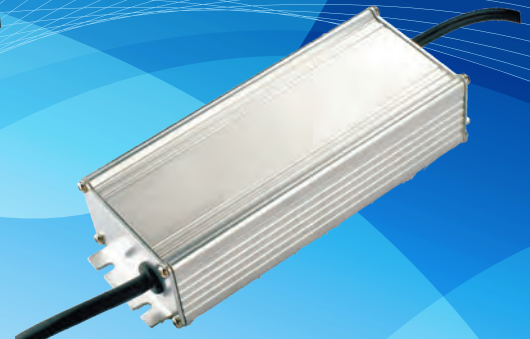
O / P Voltage
O / P Watt



100 Watt LED Driver

LD - X X X ◊ ◊

O / P Voltage
O / P Watt



120 Watt LED Driver

LD - X X X ◊ ◊

O / P Voltage
O / P Watt

65 W Series	Model	O/P Voltage	O/P Current	Watt	Drop Voltage Range	Efficiency
	LD65-15	15V	4.30A	65 W	11.3V~15V	>87%
	LD65-20	20V	3.25A	65 W	15.0V~20V	>87%
	LD65-24	24V	2.70A	65 W	18.0V~24V	>87%
	LD65-36	36V	1.80A	65 W	27.0V~36V	>87%
	LD65-48	48V	1.35A	65 W	36.0V~48V	>87%

100 W Series	Model	O/P Voltage	O/P Current	Watt	Drop Voltage Range	Efficiency
	LD100-15	15V	6.66A	100 W	11.3V~15V	>87%
	LD100-20	20V	5.00A	100 W	15.0V~20V	>87%
	LD100-24	24V	4.16A	100 W	18.0V~24V	>87%
	LD100-36	36V	2.77A	100 W	27.0V~36V	>87%
	LD100-48	48V	2.08A	100 W	36.0V~48V	>87%

120 W Series	Model	O/P Voltage	O/P Current	Watt	Drop Voltage Range	Efficiency
	LD120-15	15V	8.0A	120 W	11.3V~15V	>87%
	LD120-20	20V	6.0A	120 W	15.0V~20V	>87%
	LD120-24	24V	5.0A	120 W	18.0V~24V	>87%
	LD120-36	36V	3.3A	120 W	27.0V~36V	>87%
	LD120-48	48V	2.5A	120 W	36.0V~48V	>87%

Input	
Voltage	100-240 VAC 50~60Hz
AC Current	1.0A Max. for 65W 1.4A Max. for 100W 1.7A Max. for 120W
Inrush Current	Less Than 60A at 230V for 65W Less Than 80A at 230V for 100 & 120 W
Output	
Current	± 6% Output Rated Current (Constant Current)
Ripple	5% Vp-p Max. for Output Voltage @ Full Load
Transient Response	0.5mS for 50% Load Change Typical
Hold-up Time	10mS @ Full Load
Protection	Short Circuit Protection/ Over Voltage Protection 110%~150%

Electrical	
Topology	Switching Flyback
Dielectric Withstand	I/P-O/P:3750VAC I/P-FG:1.88KVAC O/P-FG:0.5KVAC
Isolation Resistance	I/P-O/P, I/P-FG, O/P-FG:100M Ohms/ 500VDC/25°C/70%RH
Leakage Current	3.5mA Max.
Harmonic Current	Compliance to EN61000-3-2 Class C EN61000-3-3
EMS Immunity	Compliance to EN61000- 4-2,3,4,5,6,8,11
MTBF	300,000 Calculated Hours at 25°C, by Telcordia SR-332

Environmental	
Operating Temperature	-25 to+50°C
Storage Temperature	-40 to+80°C
Relative Humidity	Operating:20 to 100% RH Storage:10 to 95% RH
Cooling	Natural Convection Cooling
Mechanical	
Case Dimension	L158 × W53 × H36 (mm) (Ref.) For 65 W L149 × W62 × H39 (mm) (Ref.) For 100 W L172 × W67 × H39 (mm) (Ref.) For 120 W
Weight	65W : 500g 100W : 700g 120W : 890g (Ref.)