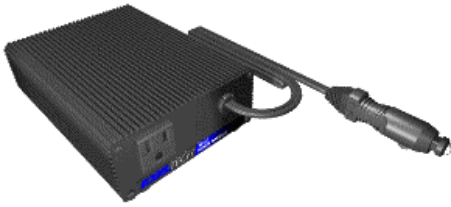


XP125



XP250



XP1100



XP600



Made in America, the **EXELTECH XP SERIES INVERTERS** are the most affordable, reliable, lightweight and best regulated, true sine wave inverters available. The **XP SERIES** will operate any type of load. Everything you can plug into the wall can be operated by the **XP SERIES**. Available at 100Vac, 115Vac or 230Vac in 50, 60 or 400Hz.

- ✓ TRUE SINEWAVE
- ✓ 125 WATTS UP TO 1100 WATTS
- ✓ 12VDC UP TO 108VDC INPUT
- ✓ RACK MOUNT OPTIONAL
- ✓ ULTRA LIGHTWEIGHT
- ✓ 21.5YEARS MTBF

## Output Power

CONTINUOUS POWER	SURGE POWER	NO LOAD POWER	OUTPUT VOLTAGE	OUTPUT CURRENT	WEIGHT LBS.
125W	150W	5W	100	1.2	2
125W	150W	5W	117	1.1	2
125W	150W	5W	230	0.5	2
250W**	300W	6W	100	2.5	5
250W**	300W	6W	117	2.1	5
250W**	300W	7W	230	1.1	5
600W**	1100W	8W	100	6.0	6.5
600W**	1100W	8W	117	5.1	6.5
600W**	1100W	9W	230	2.7	6.5
1100W**	2200W	20W*	100	11.0	10
1100W**	2200W	20W*	117	9.5	10
1100W**	2200W	20W*	230	4.8	10

\*10W with X2 option

\*\*remote switchable

## Input Power

MODEL VOLTAGE	MINIMUM (TYPICAL)	SYSTEM (TYPICAL)	MAXIMUM (TYPICAL)	TYPICAL EFFICIENCY @ FULL POWER	PEAK EFFICIENCY @ 1/3 POWER
12V	10.4/10.6'	13.8V	16.5V	85%	87%
24V	19/21V*	27.6V	33V	87%	89%
32V	26.5/28V*	36.8V	44V	87%	89%
48V	41.5/42.5V	55.2V	62V	87%	89%
66V	57.5/58.5V*	75.9V	91V	88%	90%
108V	94/95V*	125V	149V	88%	90%

\*indicates typical cut-off voltage/warning buzzer voltage

## General

CONDITIONS	MINIMUM	TYPICAL	MAXIMUM
WAVEFORM		SINUSOIDAL	
VOLTAGE OUTPUT	-5%	NOMINAL	+5%
LINE REGULATION		.1%	.5%
LOAD REGULATION		.5%	1%
DISTORTION		1.5%	2%
FREQUENCY	-.1%	NOMINAL	+.1%

## Mechanical

Case size (WxHxD)

125W case size= 4.93" x 2.00" x 6.80"

(2 lbs)

250W case size= 5.23" x 2.77" x 10.38"

(5 lbs)

600W case size= 7.70" x 3.60" x 11.77"

(6.5 lbs)

1100W case size= 7.70" x 3.60" x 14.77"

(10 lbs)

## Options

XP Options:

- conformal coating (X7 option)
- low idle current drain (X2 option)\*
- circuit board with heat sink only

(X4 option)

\*1100 watt only

## Protection Circuitry

\*Over Voltage: Shut off at maximum input voltage, per input conditions. Automatic reset upon fault correction.

\*Under Voltage: Shut off at minimum input voltage, per input conditions

\*Thermal: 105 C internal temperature. Warning buzz 5 C before shut off

Output Short: Unit shuts off (manual reset)

\*Automatically reset

## Environmental

Temperature: -25 to 30 C full power derated above 30 C

Humidity: 5 to 95% non condensing

Altitude: -200 to 10k feet full power, derated above 10k

Audible Noise: Less than 45dba

Cooling: 600W/1100W Thermo-statically controlled forced air. 125W/250W convection cooled.

Finish: Painted aluminum, XP125 anodized aluminum

Warrantv: Full vear parts labor



# Part Numbering System

**EXELTECH XP SERIES**    **XP** - - - - - **1** - - -

**Step 1:** Model number always starts with XP.

**Step 2:** To designate wattage enter the Single character code 1 for 125, 2 for 250, 6 for 600, K for 1100

**Step 3:** To designate output voltage enter the single character code from the Vac chart

Vac OUTPUT VOLTAGE CHART			
AC Volts	100	120	130
Designation	0	1	3

**Step 4:** To designate input voltage enter the single character code from the Vdc chart

Vdc INPUT VOLTAGE CHART						
DC Volts	12	24	32	48	66	108
Designation	1	2	B	4	E	I

**Step 5:** Output frequency is designated by using the first number of the frequency 5 for 50Hz, 6 for 60Hz and 4 for 400 Hz

**Step 6:** This designates revision level (For EXELTECH use only).

**Step 7:** To designate option enter the code from the option chart below. If no option is required please leave it blank.

OPTION CHART	
Option	Code
Conformal coating	X7
Low idle current drain	X2*
Circuit board with heat sink only	X4**

\* available thru a distributor only(only on XP 1100W)

\*\* available for OEM's only

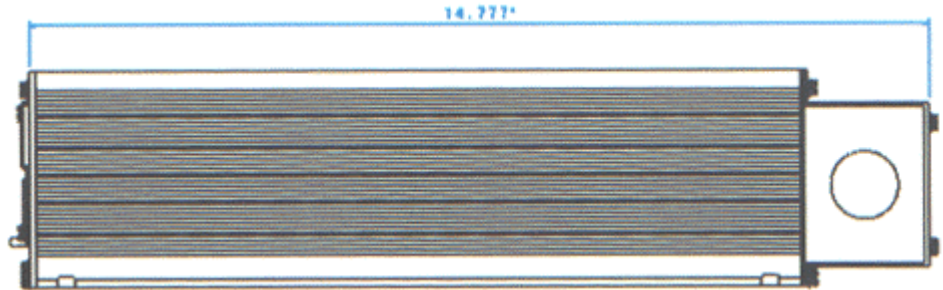
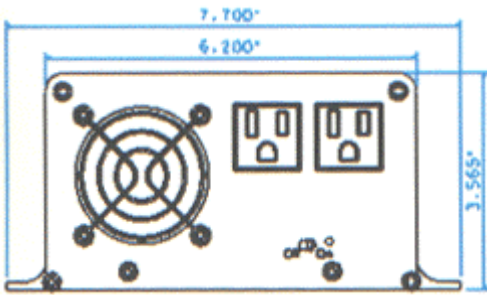
**EXAMPLE:** A XP600 with 117Vac output, 12Vdc input, 60Hz with the conformal coating option would require the following model number:  
**XP-6-1-1-6-1-X7**



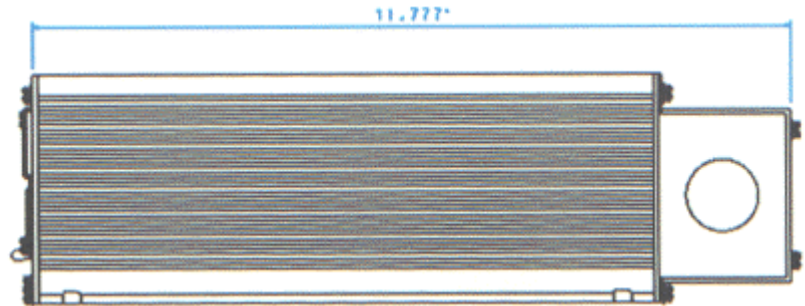
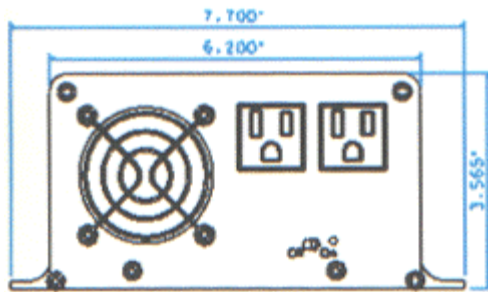
# XP SERIES

# Inverter Drawings

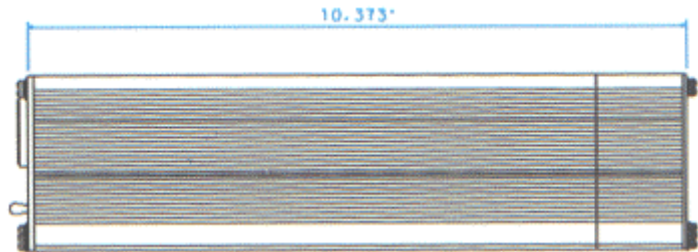
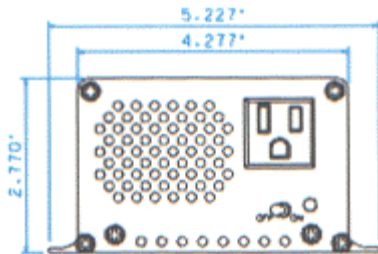
### XP1100



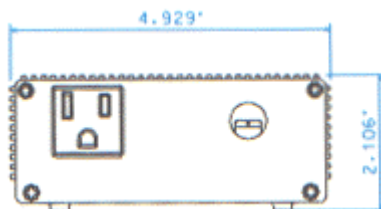
### XP600



### XP250



### XP125



All specifications are subject to change without notice.

## EXELTECH

PDF provided by:  
www.currentsolutions.com  
(800)933-7725