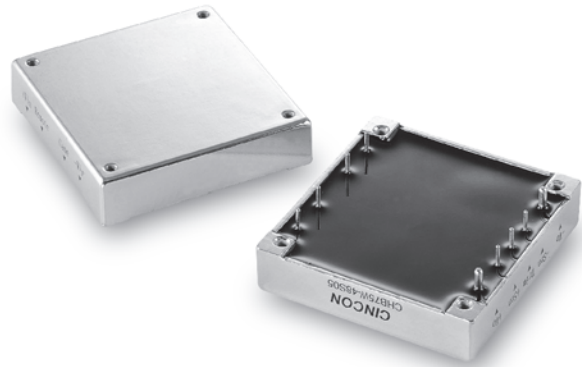


CHB75W

S E R I E S

49.5-75 WATT 4 : 1 INPUT RANGE DC-DC CONVERTERS SINGLE OUTPUT



Features

- 49.5-75W Isolated Output
- Efficiency to 85%
- 300KHz Switching Frequency
- 4 : 1 Wide Input Range
- Regulated Outputs
- Continuous Short Circuit Protection
- Five-Sided Metal Case
- Half-Brick size meet industrial standard
- CE Mark Meets 2004/108/EC
- Safety Meets UL60950-1, EN60950-1, and IEC60950-1
- UL60950-1 Approval

MODEL NUMBER	INPUT VOLTAGE	OUTPUT VOLTAGE	OUTPUT CURRENT		INPUT CURRENT		% EFF.	Capacitor Load max.
			MIN.	MAX.	NO LOAD	FULL LOAD		
CHB75W-24S33	9-36 VDC	3.3 VDC	0mA	15 A	50 mA	2611 mA	79	15000µF
CHB75W-24S05		5 VDC		15 A		3811 mA	82	15000µF
CHB75W-24S12		12 VDC		6.25 A		3765 mA	83	6250µF
CHB75W-24S15		15 VDC		5 A		3720 mA	84	5000µF
CHB75W-24S24		24 VDC		3.12 A		3720 mA	84	3120µF
CHB75W-24S48		48 VDC		1.56 A		3811 mA	82	1560µF
CHB75W-48S33	18-75 VDC	3.3 VDC	0mA	15 A	50 mA	1289 mA	80	15000µF
CHB75W-48S05		5 VDC		15 A		1883 mA	83	15000µF
CHB75W-48S12		12 VDC		6.25 A		1860 mA	84	6250µF
CHB75W-48S15		15 VDC		5 A		1838 mA	85	5000µF
CHB75W-48S24		24 VDC		3.12 A		1835 mA	85	3120µF
CHB75W-48S48		48 VDC		1.56 A		1860 mA	84	1560µF

NOTE: 1. Nominal Input Voltage 24 or 48 VDC

Specifications

INPUT SPECIFICATIONS:

Input Voltage Range.....	24V.....	9-36V
	48V.....	18-75V
Input Surge Voltage (100ms max.)	24V	50Vdc max.
	48V	100Vdc max.
Undervoltage lockout	24Vin power up.....	8.8V
	power down	8V
	48Vin power up.....	17V
	power down	16V

Positive Logic Remote ON/OFF^{3,4}
 Input Filter PI Type

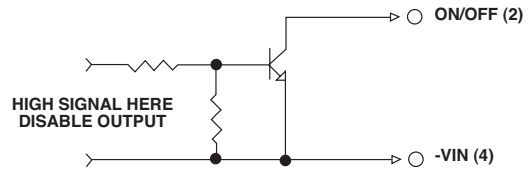
OUTPUT SPECIFICATIONS:

Voltage Accuracy :	±1% max.
Transient Response :25% Step Load Change.....	< 500µs
External Trim Adj. Range	±10%
Ripple & Noise, 20MHz BW ⁵	
3.3V & 5V.....	40mV RMS max./100mV pk-pk max.
12V & 15V.....	60mV RMS max./150mV pk-pk max.
24V.....	100mV RMS max./ 240mV pk-pk max.
48V.....	200mV RMS max./ 480mV pk-pk max.
Temperature Coefficient.....	±0.03%/°C max.
Short Circuit Protection.....	Continuous
Line Regulation ¹	±0.2% max.
Load Regulation ²	±0.2% max.
Over Voltage Protection trip Range, % Vo nom.....	115-140%
Current Limit	110% -160% Nominal Output
Start up time	5ms Typ.

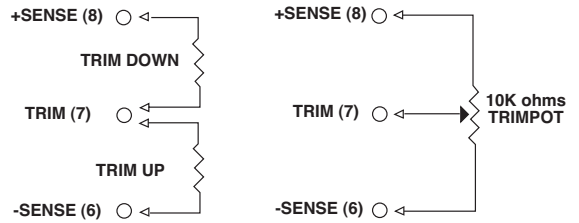
GENERAL SPECIFICATIONS:

Efficiency.....	See Table
Isolation Voltage	Input/Output..... 1500VDC min.
	Input/Case..... 1500VDC min.
	Output/Case..... 1500VDC min.
Isolation Resistance	10 ⁷ ohm min.
Isolation Capacitance	1000pF typ.
Switching Frequency	300KHz typ.
Operating Case Temperature	-40°C to 100°C
Storage Temperature	-55°C to +105°C
Thermal Shutdown, Case Temp.	100°C typ.
Humidity	95% RH max. Non condensing
MTBF	MIL-STD-217F, GB, 25°C, Full Load1000Khrs typ.
Dimensions	2.28x2.40x0.50 inches (57.9x61.0x12.7 mm)
Case Material.....	Aluminum
Weight.....	.94g

Remote On/Off Control



External Output Trim



PIN CONNECTION

Pin	Function
1	+Vin
2	ON/OFF
3	CASE
4	-V Input
5	-V Output
6	-Sense
7	Trim
8	+Sense
9	+V Output

NOTE:

1. Measured From High Line to Low Line.
2. Measured From Full Load to Zero Load.
3. Logic Compatibility Open Collector ref. to -Input.
 Module ON Open Circuit
 Module OFF < 0.8Vdc
4. Suffix "N" to the Model Number with Negative Logic Remote ON/OFF.
 Module ON < 0.8Vdc
 Module OFF..... Open Circuit
5. Output Ripple and Noise measured with 10µF tantalum and 1µF Ceramic capacitor across output. (48V: 1µF Ceramic cap. only)
6. Suffix "-C" to the Model Number with Clear Mounting Insert (3.2mm DIA.)
7. Require a 47µF Aluminum capacitor connected between +Vout and -Vout

CASE HB

All Dimensions In Inches(mm)
 Tolerance Inches: x.xx= ±0.02, x.xxx= ±0.010
 Millimeters: x.x= ±0.5, x.xx= ±0.25

