

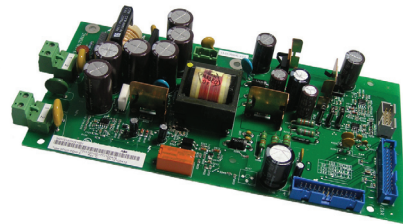
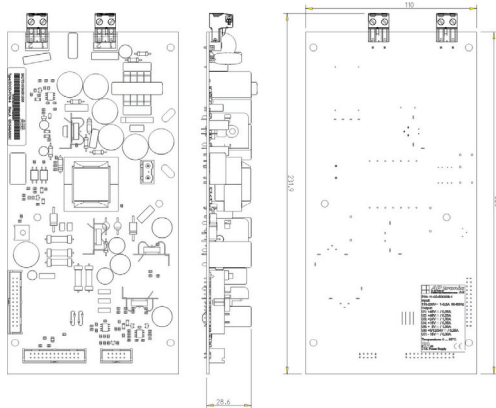
Auxiliary Power Supply for Motor Drives

solved.
www.aptronic.de



Description


The AUX-PSU are auxiliary power supplies for Megawatt DC-Drives.



Details

Safety Category: SELV

Output

- Output Voltage U1: +48V
@ 0 ... 0,05 A, Current limitation
- U2: +48V
@ 0 ... 0,25 A
- U3: +24V
@ 0 ... 0,8 A
- U4: +15V
@ 0,1 ... 0,8 A
- U5: +5V 
@ 0,5 ... 1,0 A (separate RTN)
- U6: ENCV
5 or 12 or 24 V @ 0 ... 0,25 A
Provided by a thermal protected linear regulator
Selectable by jumper
- U7: -15V @ 0,1 ... 0,3 A

Input

- Nominal Input Voltage:
115 – 230 V AC +13 / - 20%; L/N/PE
- Input Voltage Range (AC): 93 ... 260 V AC
- Input Voltage Range (DC):
190 – 350 V DC (via separate terminals)
- Frequency: 44 - 65 Hz
- Input Current: < 1 A @ 115V; < 0,5 A @ 230V
- Inrush Current: < 12 A (cold start)

 APtronic AG Headquarter
Bad Sassendorf, Germany

Features

- Protection degree: IP00
- EN 60950, UL 60950 (E 222 603)
- Low voltage directive (CE)
- EMI directive (CE)

 Production site
Dongguan, China

APtronic AG

Your Partner for customized Power Supplies

APtronic AG

An der Helle 26
D-59505 Bad Sassendorf - Lohne
Germany

Phone +49 (0) 2927-9194-0

Fax +49 (0) 2927-9194-50

info@aptronic.de

 **APtronic**
Aktiengesellschaft
Adaptive Power Solutions