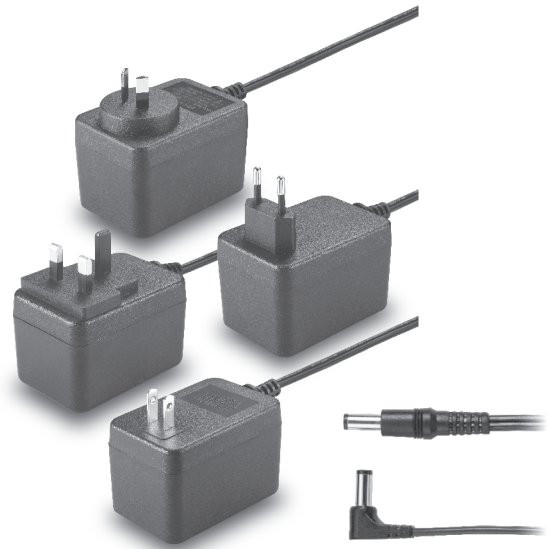


# TRG25

S E R I E S

## 25W SWITCHING ADAPTER



### Features

- Universal Input Range 90~240VAC
- Meets EN55022 Class "B" and CISPR/FCC Class
- Continuous Short Circuit Protection
- Over Voltage Protection
- Meet CEC & ErP Level V  
(Output Cable Length  $\leq$  1800mm)  
**(TRG25033: Output Cable Length  $\leq$  720mm)**  
**(TRG25050: Output Cable Length  $\leq$  1220mm)**

### Ordering information

TRG25XXX	X	-	XX	E	XX
<b>Model No.</b>	<b>AC Plug Type</b> A : USA 2 Pin E : Europe 2 Pin U : British 3 Pin S : Australia 2 Pin		<b>DC Plug Type</b> * Please see Page 243 for more detailed descriptions	<b>OVP</b> E: With OVP	<b>DC Cable Length and Type</b> 01 : 720mm 02 : 1220mm 03 : 1800mm 11 : 720mm with Ferrite Core 12 : 1220mm with Ferrite Core 13 : 1800mm with Ferrite Core * 18AWG / UL1185 * 16AWG / UL1185 for Vo: 3.3V, 5V

MODEL	OUTPUT VOLTAGE	OUTPUT CURRENT	RIPPLE & NOISE NOTE 1	VOLTAGE ACCURACY NOTE 2	LINE REGULATION NOTE 3	LOAD REGULATION NOTE 4	%EFF. (Typ.) NOTE 5
TRG25033	3.3 V	4.0 A	50 mVp-p	$\pm 2\%$	$\pm 1\%$	$\pm 6\%$	74%
TRG25050	5 V	4.0 A	1%	$\pm 2\%$	$\pm 1\%$	$\pm 6\%$	76%
TRG25090	9 V	2.5 A	1%	$\pm 2\%$	$\pm 1\%$	$\pm 5\%$	79%
TRG25120	12 V	2.1 A	1%	$\pm 2\%$	$\pm 1\%$	$\pm 5\%$	83%
TRG25150	15 V	1.67 A	1%	$\pm 2\%$	$\pm 1\%$	$\pm 3\%$	84%
TRG25180	18 V	1.4 A	1%	$\pm 2\%$	$\pm 1\%$	$\pm 2\%$	85%
TRG25240	24 V	1.05 A	1%	$\pm 2\%$	$\pm 1\%$	$\pm 2\%$	85%

## Specifications

### INPUT SPECIFICATIONS:

Voltage ..... 90~264Vac  
 Frequency ..... 47 to 63Hz  
 Input Current ..... 0.7A max.  
 Inrush Current ..... 50A max. @240Vac  
 Conducted EMI ..... CISPR/FCC Class B  
 Leakage Current ..... 0.25mA max.

### OUTPUT SPECIFICATIONS:

Holdup Time ..... 10ms typ. @115Vac  
 Short Circuit Protection ..... Continuous(Auto Recovery)  
 Over Voltage Protection ..... TVS Component to Clamp  
 Temperature Coefficient .....  $\pm 0.05\%/^{\circ}\text{C}$

### GENERAL SPECIFICATIONS:

Isolation ..... Input to output = 4,242VDC  
 Operating Temperature .....  $0^{\circ}\text{C}\sim 60^{\circ}\text{C}$  (see derating curve)  
 Storage Temperature .....  $-20\sim 85^{\circ}\text{C}$   
 Humidity ..... 93% RH max. Non condensing  
 Cooling ..... Natural Convection  
 Switching Frequency ..... 65KHz Typical  
 MTBF ..... MIL-HDBK-217F, GB, at  $25^{\circ}\text{C}/115\text{VAC}$  ..... 300K hrs min.  
 Altitude ..... 2000m  
 Dimensions ..... 3.169x1.932x2.205 inches (80.5x49.06x56.00 mm)  
 Weight ..... 280g (0.62 Pounds)

### SAFETY AND EMC:

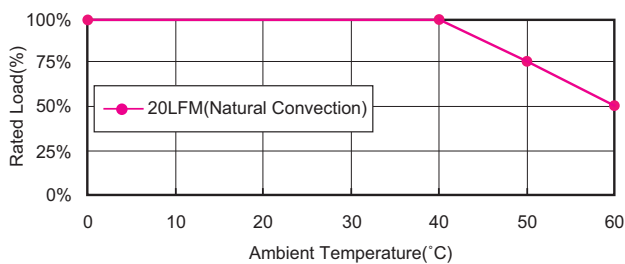
Emission and Immunity ..... EN55022 Class B, FCC Part15 Class B  
 EN61000-6-3, EN61000-3-2, EN61000-3-3  
 EN55024, EN61204-3, EN61000-6-1  
 Safety ..... IEC60950-1, EN60950-1, UL60950-1

### NOTE:

1. Add a 0.1 $\mu\text{F}$  ceramic capacitor and a 10 $\mu\text{F}$  E.L. capacitor to output for Ripple & Noise measuring @20MHz BW.
2. Voltage setpoint at 60% full load.
3. Line regulation measured from 100Vac to 240Vac, full load.
4. Load regulation measured from 60% to 100% full load and from 60% to 20% load (60% +/- 40% full load).
5. Typical efficiency at 230VAC and full load at  $25^{\circ}\text{C}$ .
6. "Various TR Series adapters are PSE certified. PSE certification alone is not sufficient for importation into Japan. A valid PSE mark must contain the name of the importer as shown in the example below. If PSE mark is required, the name of the registered importer must be supplied to Cincon on order placement. Product labels will not contain PSE mark if importer name is not supplied. Consult factory or local representative for details".



## TRG25 Series Derating Curve

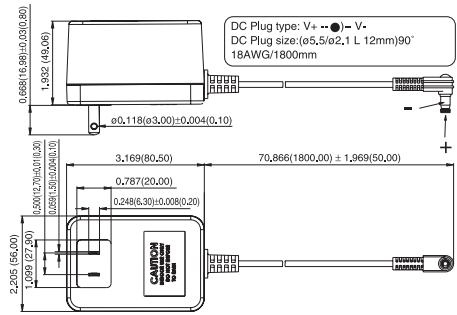


Typical at  $25^{\circ}\text{C}$ , nominal line and 75% load, unless otherwise Specified

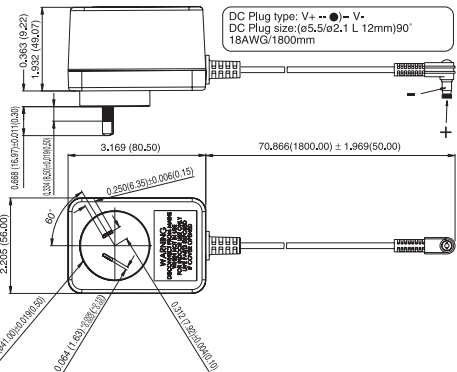
## Mechanical Specification

All Dimensions In Inches(mm)  
 Tolerance Inches: x.xxx=  $\pm 0.02$   
 Millimeters: x.xx=  $\pm 0.5$

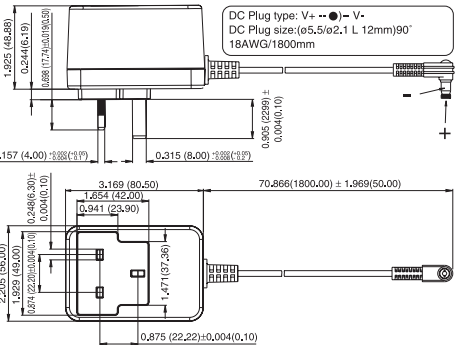
**FIG.A**



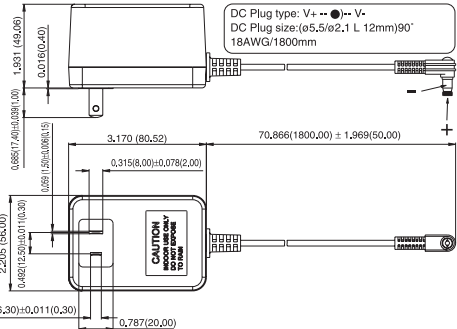
**FIG.S**



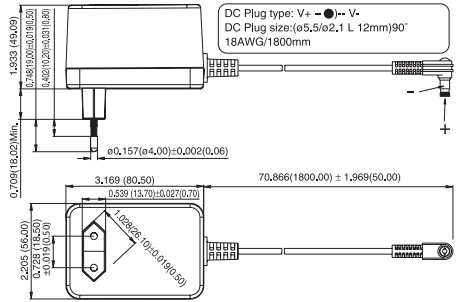
**FIG.U**



**FIG.J**



**FIG.E**



TRG25